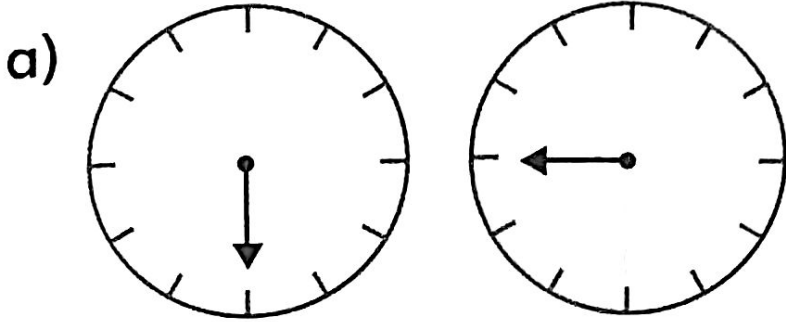
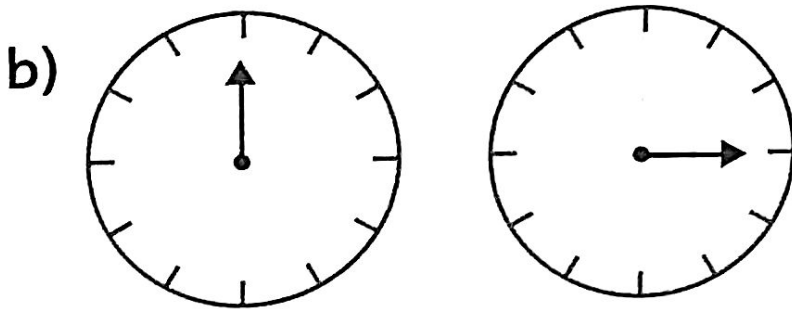


Describing turns

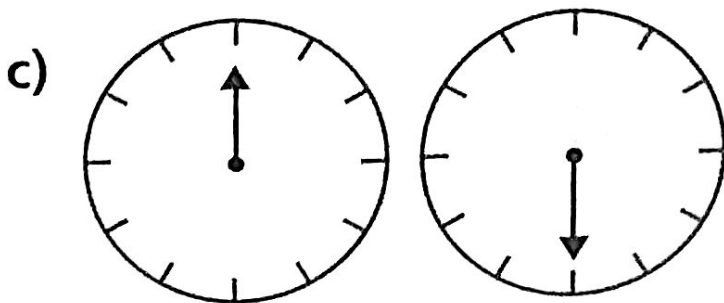
I Circle the correct word in each sentence.



The arrow moved a quarter turn clockwise / anticlockwise.

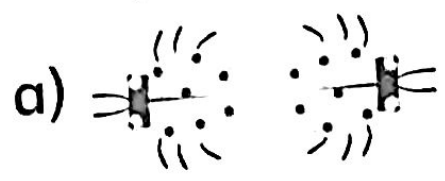


The arrow moved a three-quarter turn clockwise / anticlockwise.

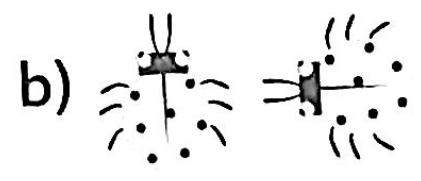


The arrow moved a half turn clockwise / anticlockwise.

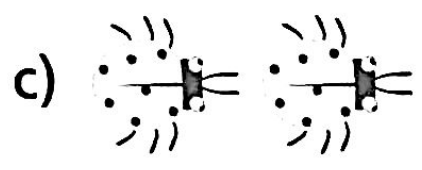
2 Complete the sentences to describe the turns.



The ladybird moved a _____ turn clockwise.



The ladybird moved a _____ turn anticlockwise.

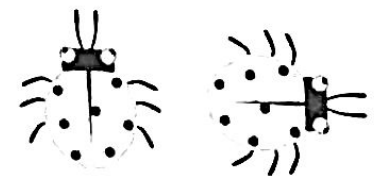


The ladybird moved a _____ turn clockwise.

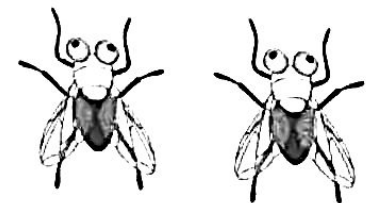
3 Match each image to the correct description.



Quarter turn clockwise



Whole turn anticlockwise



Half turn clockwise

4 Here is a fly. It has turned clockwise.



Do you agree?

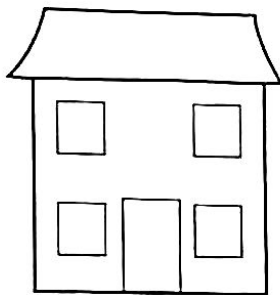
I wonder if it is always quicker to turn clockwise.



Circle your answer and explain. Yes / No

Reflect

Here is a house.



Draw the turns in the boxes below.

Half turn
clockwise

Three-
quarter turn
anticlockwise

Quarter turn
clockwise