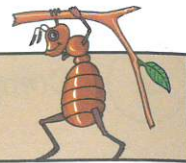


# Word Endings — 'ant' and 'ent'



Sometimes words ending in '-ant' or '-ent' sound similar, but are spelt differently.

assistant      apparent

Both the '-ant' and '-ent' endings sound like 'unt'.

1 Circle the correct spelling of each word to complete the sentences below.

Fern has bought a new apartment / apartmant in London.

Luis is a native inhabitant / inhabitent of Venezuela.

The celebrations were very extravagant / extravagent.

This pen is a permanant / permanent marker.

2 Circle the words below that are spelt incorrectly. Then write the correct spellings on the dotted lines.

comment	hesitent	.....
accidant		.....
distant	instrument	.....
vacent		.....
innocent	decent	.....
	relevent	.....

3 Write each of these words with the correct -ent or -ant ending.

arrog- →	.....	sil- →	.....
pres- →	.....	leni- →	.....
evid- →	.....	brilli- →	.....
observ- →	.....	toler- →	.....

4 Complete the words in these sentences using -ent or -ant.

The footballer had an argum..... with the referee.

The Prime Minister makes frequ..... trips abroad.

The expect..... crowd waited for the band to arrive.

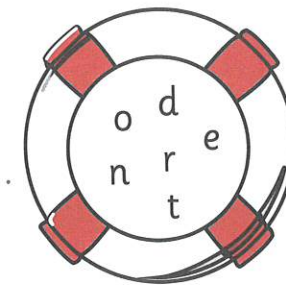
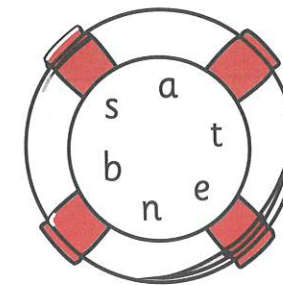
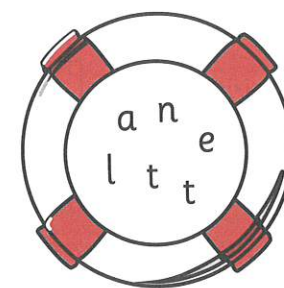
Julie wore an eleg..... dress to the ball last Thursday.

We saw an obedi..... eleph..... at the zoo.

The team were confid..... they would win the match.

Charlie's hairstyle is very differ.....

5 Sort the letters below into the right order to spell a word ending in -ant or -ent.



6 Circle the words that you can add -ent to the end of. Write one sentence that includes both words you've circled.

comm-      vac-      independ-      account-

.....  
 .....  
 .....