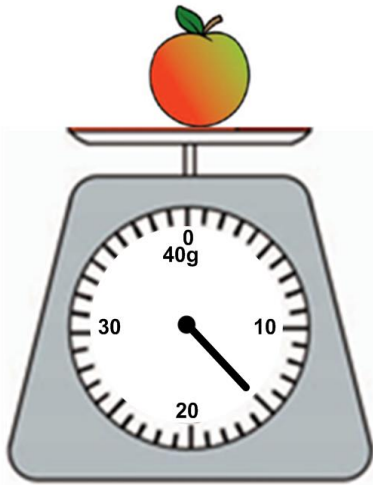


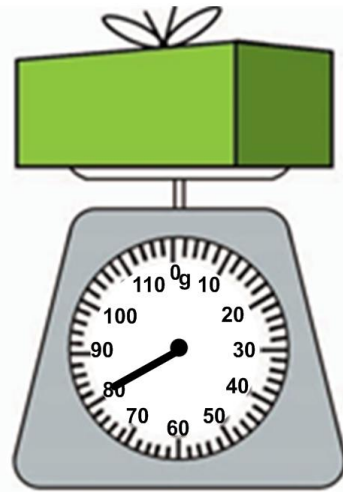
Key Learning: To interpret scales labelled in grams and compare masses of objects measured in grams

Match the masses to the correct scale.



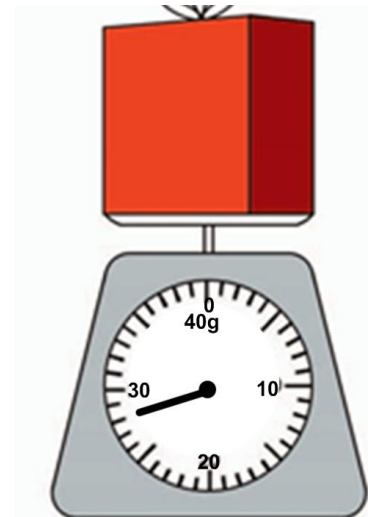
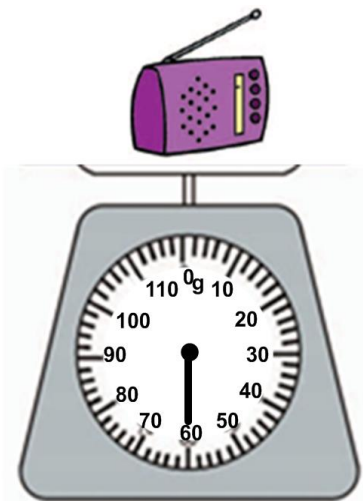
28 g

80 g



60 g

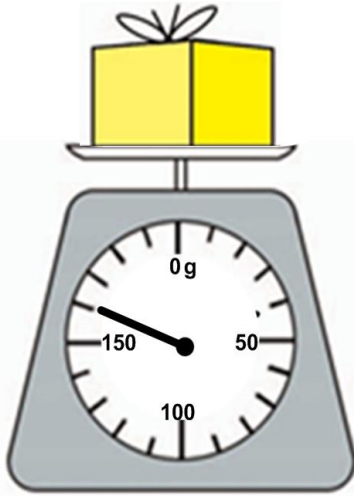
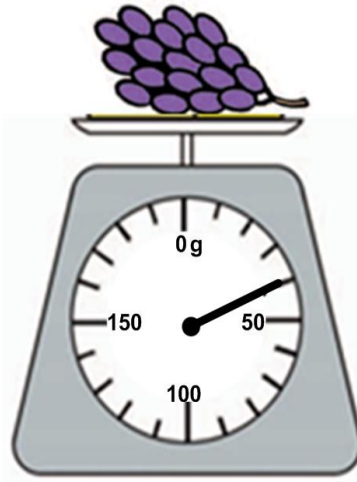
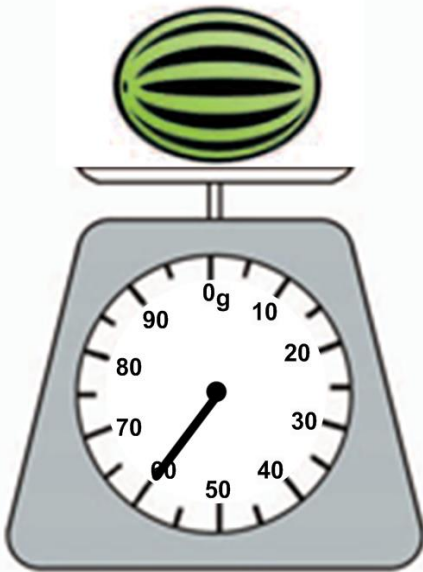
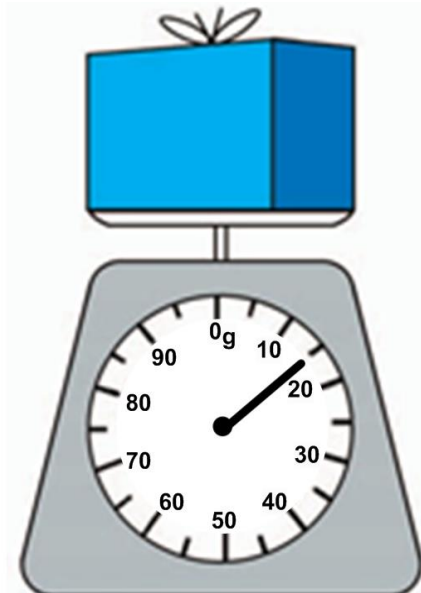
15 g



< < <

Key Learning: To interpret scales labelled in grams and compare masses of objects measured in grams

Record the weight of each parcel using 'g'.

 g g g g g

>

 g

>

 g

>

 g

heaviest

lightest